



**UNLEASH THE POWER OF  
HIGH PERFORMING TEAMS.**





# THE GLOBAL PERFORMANCE GAP & OUR HIGH-PERFORMANCE ENGINE

High-performing teams are the engine of business success. Yet, a significant gap exists between potential and reality. We believe there is a better way to overcome this challenge and build an engine for sustainable high performance.

## The Global Performance Gap - *clearly something is not working*



**85%**

Employees worldwide are disengaged at work

(Gallup, State of the Global Workplace)



**75%**

Teams are dysfunctional, lacking clear goals and accountability

(Harvard Business Review)



**530K**

Workdays annually lost due to slow or poor decision making

(Bain & Company)

***At Miki Island, we don't just fix engagement - we provide the framework to build a High-Performance Business Engine!***

Our philosophy is simple: high performance is an outcome driven by a powerful engine built on effective teams, effective leaders, and effective team members. This engine is powered by a strong culture and a clear strategy to drive business results.

### **HIGH PERFORMANCE**

SALES | PRODUCTIVITY | INNOVATION | REVENUE  
CUSTOMER SATISFACTION | SPEED

#### **STRATEGY**

What we do: setting clear goals, strategic priorities, and direction to drive performance.

#### **CULTURE**

How we do things: creating a High Performance Culture within the organization.

**HP  
ENGINE**

**Effective  
Teams**

**Effective  
Leaders**

**Effective  
Team Members**

**VALUES &  
BEHAVIOURS**



Your Values



Your Values



Your Values



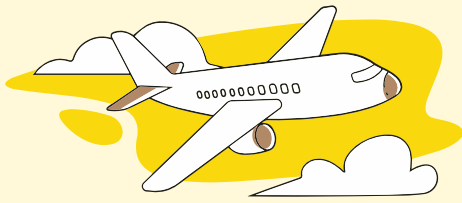
Your Values



Your Values



Your Values



## BUSINESS IMPACT



### Powering Business Success Through People

High-performing teams & Organizations make **better decisions, deliver faster results, and retain top talent.**

Miki Island provides the tools to measure, develop, and sustain this impact, drawing from proven research on team performance.

- High-performing teams are 21% more productive than low-performing teams. (Gallup, 2023)
- Inclusive, high-performing teams make 87% better decisions and do so 2x faster. (Source: Bain & Company, 2017)
- Organizations with highly engaged teams are 4.5x more likely to be innovation leaders in their industry. (Source: Hay Group, 2023)
- Companies with high-performing teams achieve 2.3x higher cash flow per employee. (Source: Bain & Company, 2017)
- Employees in high-performing teams are 50% less likely to leave within the next year. (Source: McKinsey, 2020)





# OUR PROGRAMS & PROVEN RESULTS

## Flagship Programs & Assessments

Miki Island offers immersive, research-backed programs that equip leaders, teams, and organizations with the skills and insights to perform at their best:

- Team Boosters & Team Offsites
- Team Development Journeys
- Leadership Programs
- Enterprise Roll Out



### Assessment & Diagnosis

- Pulse Team Effectiveness
- Flow Team Wellbeing
- Sync Alignment
- Scan Team Member
- Scope Team Leader
- LightHouse Organizational Support Index



### Team Booster

- Flow Wellbeing
  - Sync Alignment
  - Pulse Team Effectiveness
- (90-min Team Booster with assessment)*



### Team Offsites & Team Building

- Collective Shift
- Flow Wellbeing
- Spark Efficiency
- Expect the Unexpected
- Strategy Offsites
- Customize - Make your own

*(Includes Business Simulation)*



### Team Coaching Journey

- Take Off
- Turbulence
- To New Heights
- Customize - Make your own

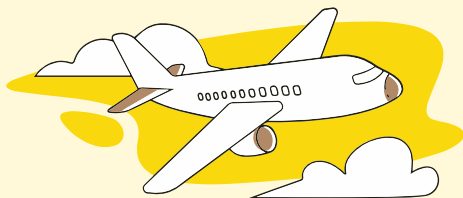
*(30-day to 120-day journey)*



### Leadership & Training Programs

- Effective Team Member
- Leading & Building HP Teams
- Shift: from ME to WE
- Leaders as Coach & Mentors
- Managing Conflicts
- Feedback in Action
- Customize - Make your own





# THE MIKI ISLAND PLATFORM

## Miki Island: The All-in-One Team Development & High Performance Platform

Miki Island is more than just a game; it's a complete, all-in-one HP development platform. It's the engine that brings our high-performance philosophy to life, transforming teams and organizations into powerful drivers of business success.

By combining behavioral science, engaging gameplay, AI, and data-driven insights, the Miki Island Platform empowers individuals and teams to unlock their full potential and achieve high performance.



**SIMULATION**



**ASSESSMENT**



**AI & ANALYTICS**



**MICRO LEARNING**



**COACH-LED**



**ELEVATED BY  
AI & DATA**



## Designed with a Research Institute - Built on Proven Science & Research



**Susan Wheelan**  
Founder,  
Author & Psychologist



**Christian Jacobsson**  
Head of Research  
GDQ Associate AB



**Maria Akerlund**  
CEO GDQ Associate



**Oussama Labib**  
CEO Aeqlia  
Creator of Miki Island

**Miki Island** is a result of a collaboration between **Aeqlia, a digital learning company**, and **GDQ Associates AB, a leading research institute founded by Dr. Susan Wheelan**, an expert in team development.

The platform is built on her decades of research, transforming team development into a highly engaging, measurable, and results-driven experience. This partnership has created a platform where science and play come together to unlock peak performance.

**CREATING  
EFFECTIVE  
TEAMS**  
*A Guide for Members and Leaders*  
FIFTH EDITION







# GLOBAL NETWORK & SUCCES STORIES

## OUR GLOBAL PARTNERS



## TRUSTED BY AMAZING CLIENTS



**250,000+**  
participants



**300+**  
partners and  
facilitators



**30+**  
countries



**250+**  
clients



We are working with a global network of **300+ certified team coaches and trainers**, including industry leaders.

All are certified by world-leading coaching associations like ICF, Team Coaching Global Alliance or EMCC Global and others.

- 35+ countries
- 20+ languages

**And growing day by day!**



**EVER THOUGHT OF BUSINESS SIMULATION?!**

Miki Island is a very immersive and energizing workshop that allowed our team to practice the key behaviours of high performing teams and agile decision making all for performance improvement back at work!

Microsoft **Anne Lepissier**  
General Manager

**THE LEADING GAME BASED LEARNING!**

It's fun and highly practical... And more importantly giving you all of the ingredients necessary to become a High Performing Team back at work, in real life!

carta **Shavik Vashil**  
Managing Director

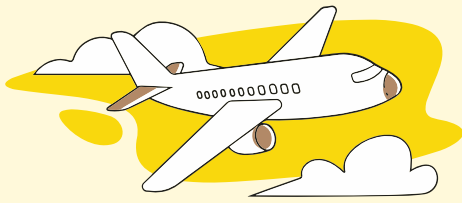
**ACCELERATING ADOPTION OF AGILE WAYS OF WORKING**

I am impressed by the amount of real work life value teams have taken from this journey. Not only it was interesting, but it's applicable. The set of changes in behavior and attitudes initiated have boosted the agile growth and performance of our teams.

skyline **Bram de Blok**  
Skyline Communication,  
Global Agile Lead

Leverage Miki Island's programs and global coach network to unlock team potential, enhance leadership, and achieve measurable results. **Get in touch - <https://calendly.com/miki-island>**





## MIKI ISLAND IN ACTION





**See You On The Island!**

 [www.miki-island.com](http://www.miki-island.com)

 [oussama.labib@aeqlia.com](mailto:oussama.labib@aeqlia.com)